

Consultation on Women, Mining and Development

March 16-18th, 2009

Hyderabad, India



Organised by
Dhaatri Resource Centre for Women and
Children
in association with
mines,minerals and People & Samata

Workplace situation for women

- Wages
- Working hours
- Nature of work
- Work facilities
- Migration/seasonal/local workforce
- Being laid off
- Complaints or redressal mechanism
- Child labour
- Social security



Safety/mine accidents (State/mining companies/contractors)

Nature of mine accidents

Medical assistance and compensation

Pension

Alternate work or employment for a family member

Complaints or redressal mechanisms



Health

- Awareness of health hazards related to the minerals they handle
- Health problems being experienced specifically by adolescent girls
- Reproductive and sexual health
- Precautions
- Company/mine owner interventions
- Associated problems of indebtedness, absenteeism
- Expenditure on health
- Source of information, advise and assistance on health related issues
- What are the health services accessible to you
- How are atrocities addressed



Social impacts

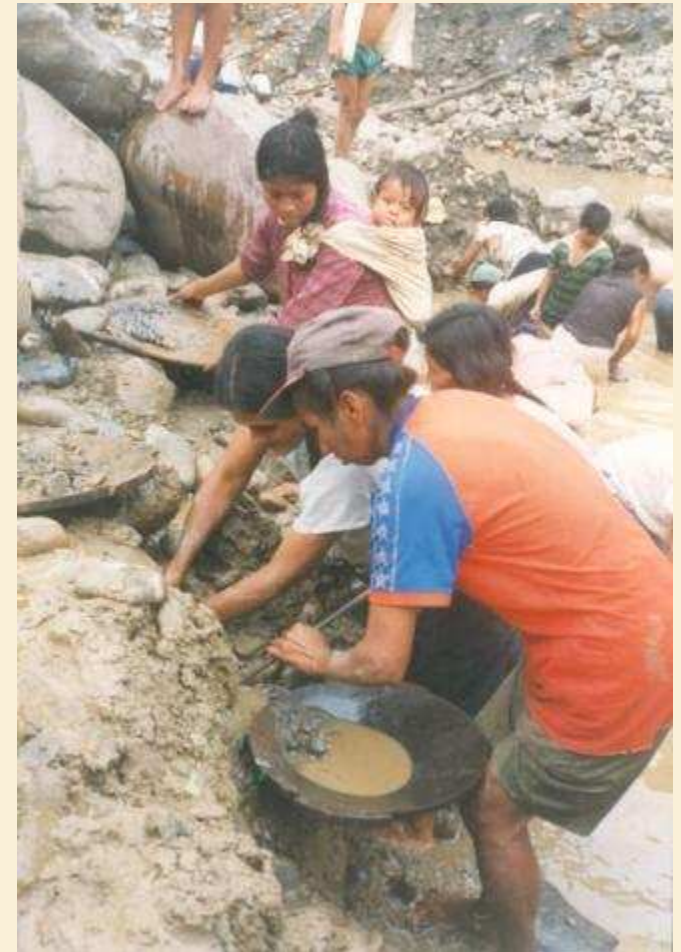
Social problems at the workplace:

- sexual exploitation,
- prostitution
- physical and mental abuse

Social problems in the community and family: domestic violence

- alcoholism,
- HIV/AIDS
- prostitution
- conflicts of migrant labour with local communities

Any other impacts



Basic amenities

Critical areas

Access to:

Housing

Schools

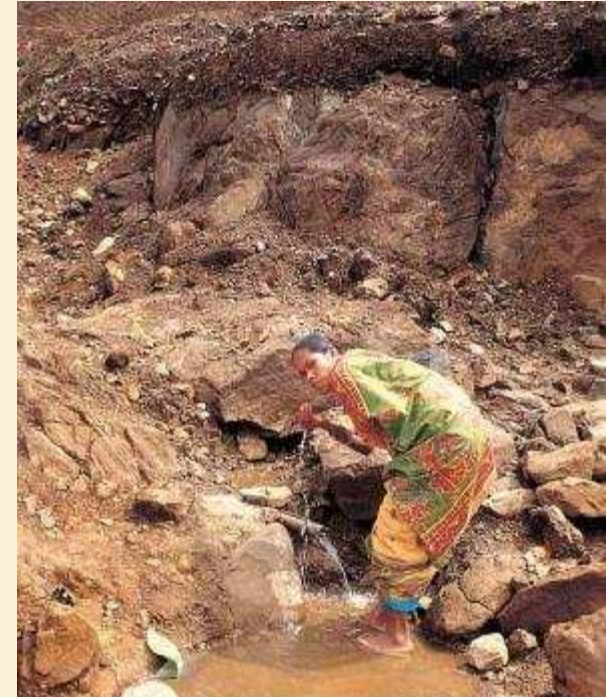
Toilets and bathing area

Electricity



Water

- Access to water in terms of quantity
- Access to water in of quality (contamination, pollution, water borne diseases)



Basic rights

- Availability of ration cards
- Voter id cards
- Does the settlement come under the local *panchayat*
- Conflicts with local communities on resource use Eg. fuelwood
- Cultural conflicts
- Platform for women to access information eg. wage rates, government schemes, pensions



Mine closure

- Employment alternatives
- Closure plans



Kind of support structures available to address women's issues

- SHGs
- Unions
- Cooperatives
- Panchayats
- NGOs



What are the intervention strategies

- Legal strategies
- Collective bargaining strategies
- Political
- List others
- Grassroot to international level strategising

Mistakes and the lessons learned through our campaigns

Other development alternatives

- Looking at alternatives other than mining
- Responsible mining
- Women's role in achieving this or fighting for this





THANK YOU